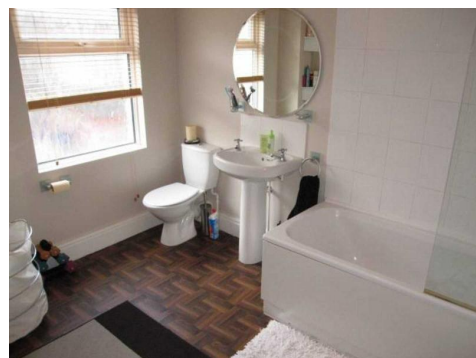


Reeds Rains

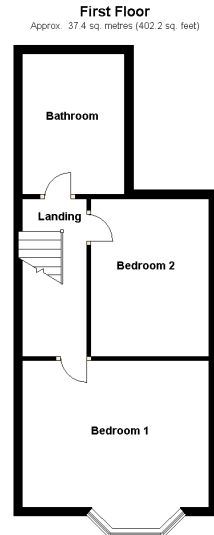
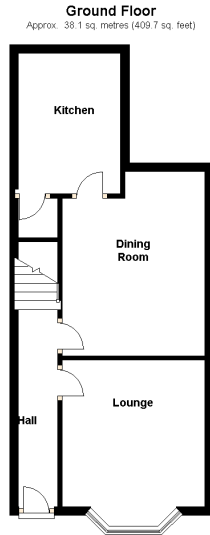
The Estate Agent

www.reedsrains.co.uk



Corona Road, Waterloo, Liverpool
£129,950

We Are Pleased To Offer For Sale, This Well Maintained Traditional Terraced Property Which Briefly Comprises, Hall, Lounge, Dining Room, Kitchen, Two Bedrooms And Modern Family Bathroom. Externally There Is A Small Walled Garden To The Front And A Rear Yard. The Property Has Double Glazing And A Gas Central Heating System . Early Viewing Is Recommended, Please Contact The Waterloo Branch For Further Information



Total area: approx. 75.4 sq. metres (811.9 sq. feet)

Directions

Corona Road is situated between Handfield Road and St Johns Road in Waterloo

- Hall

- Front Lounge

3.84m (in bay) x 3.25m

- Rear Dining Room

4.19m (Max) x 3.38m

- Kitchen

3.2m x 2.49m

- With Integrated Hob And Oven

- Landing

- Front Bedroom 1

3.89m (in bay) x 4.32m

- Rear Bedroom 2

3.61m x 2.77m

- Bathroom

3.2m x 2.59m

- 3 Piece White Modern Suite

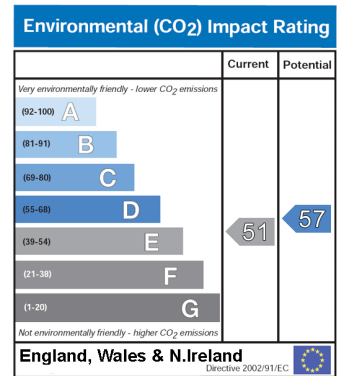
- Outside

- Front Walled Garden

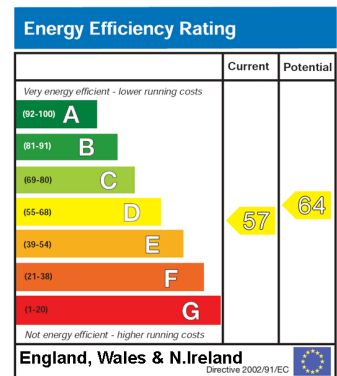
- Rear Yard

- Hip Available Please Ask For Details

- Floorplan



The environmental impact rating is a measure of a home's impact on the environment in terms of carbon dioxide emissions. The higher the rating the less impact it has on the environment.



The energy efficiency rating is a measure of the overall efficiency of a home. The higher the rating the more energy efficient the home is and the lower the fuel bills will be.

Reeds Rains Mortgage Advice - We can introduce you to the team of highly qualified Mortgage Advisers at Reeds Rains Ltd. They can provide you with up to the minute information on many of the interest rates available. To arrange a fee-free, no obligation appointment, please telephone this office. **YOUR HOME MAY BE REPOSSESSED IF YOU DO NOT KEEP UP REPAYMENTS ON YOUR MORTGAGE.** **Services Connected** - Please note that any services, heating systems or appliances have not been tested, and no warranty can be given or implied as to their working order. **All Measurements** - All Measurements are Approximate **Laser Tape Clause** - All measurements have been taken using a laser tape measure and therefore, may be subject to a small margin of error. Measurements are approximate. Not to Scale. For Illustrative purposes only.

Agent's Notes Please note that we have not tested any apparatus, equipment, fixtures, fittings or services, and so cannot verify they are in working order or fit for their purpose. Furthermore solicitors should confirm moveable items described in the sales particulars are, in fact, included in the sale since circumstances do change during marketing or negotiations. A final inspection prior to exchange of contracts is also recommended. Although we try to ensure accuracy, measurements used in this brochure may be approximate. Therefore if intending purchasers need accurate measurements to order carpeting or to ensure existing furniture will fit, they should take such measurements themselves.