

Reeds Rains

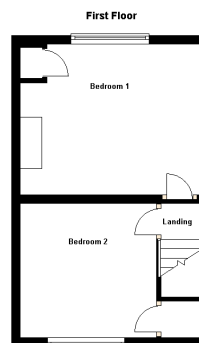
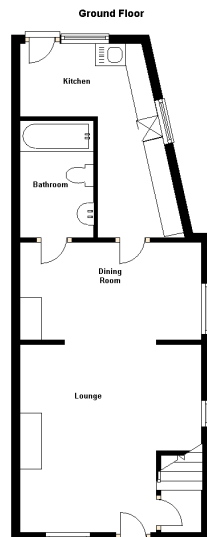
The Estate Agent

www.reedsrains.co.uk



Palmerston Street, Underwood, Nottingham £69,950

Two bedroom semi detached house in a semi-rural village cul-de-sac, with NO UPWARD CHAIN. In need of refurbishment, the property offers: open lounge and dining room, ground floor bathroom and kitchen. Two first floor bedrooms, small side driveway and rear garden.



Directions

From Eastwood, take the A608 Mansfield Road, through Brinsley, into Underwood. At the T junction, turn left and first left again along Main Road. Take the right turn into Palmerston Street, where the property is located on the right and is identified by our For Sale board.

Ground Floor

- Lounge Area

4.28m x 4.16m (max) Gas fireplace, double glazed entrance door and front and side windows.

- Dining Area

4.17m (max) x 2.25m Double glazed side window.

- Bathroom

2.67m x 1.68m White three piece suite and over bath shower.

- Kitchen

4.43m x 2.01m (max) - L Shape 1.88m x 1.43m L-shaped kitchen with single glazed side and rear windows, single glazed door to rear garden.

First Floor

- First Floor Landing

- Bedroom 1

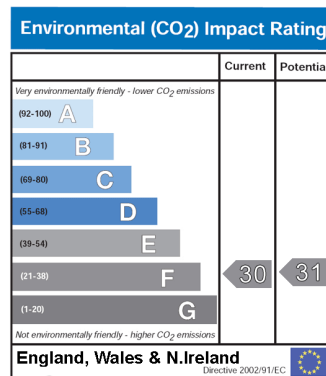
4.16m (max) x 3.45m Airing cupboard with hot water cylinder, double glazed rear window and gas heater.

- Bedroom 2

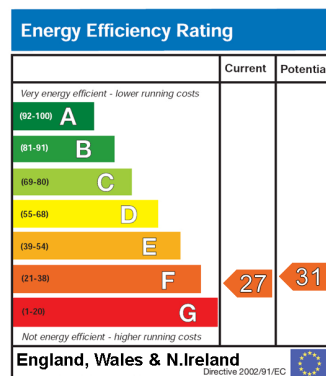
3.1m x 3.07m Double glazed front window, built in cupboard with steps to loft.

- Rear Garden

Small front garden, side drive with gate to the enclosed rear garden.



The environmental impact rating is a measure of a home's impact on the environment in terms of carbon dioxide emissions. The higher the rating the less impact it has on the environment.



The energy efficiency rating is a measure of the overall efficiency of a home. The higher the rating the more energy efficient the home is and the lower the fuel bills will be.

Measurements are approximate. Not to Scale. For Illustrative purposes only.

Agent's Notes Please note that we have not tested any apparatus, equipment, fixtures, fittings or services, and so cannot verify they are in working order or fit for their purpose. Furthermore solicitors should confirm moveable items described in the sales particulars are, in fact, included in the sale since circumstances do change during marketing or negotiations. A final inspection prior to exchange of contracts is also recommended. Although we try to ensure accuracy, measurements used in this brochure may be approximate. Therefore if intending purchasers need accurate measurements to order carpeting or to ensure existing furniture will fit, they should take such measurements themselves.